



bj riviera  holidays

# Camping Prairies de la Mer

All the BJ Riviera team is dedicated to your holiday enjoyment.

We are delighted to announce our partnership between BJ Riviera Holidays and Marino Mobilhomes to create the DSOne Vacances group. Our office is situated at the emplacement n°1761.

Our Mobile homes are located on Prairies de la Mer, one of the premier camping parks of the Cote d'Azur in the heart of the bay of Saint Tropez. Only a stroll away from the beautiful Port Grimaud, The Riviera's little Venice. Let yourself be tempted by a stay in the south of France on a beachside camp site.





## Village dedicated to your holiday experience...

### Facilities on site

- 2 Supermarkets
- Bakers
- Laundry
- Newsagents
- Carrousel
- Mini fair ground
- Ice cream parlours
- Mini markets
- Hairdressers
- Excursions office
- Restaurants
- Fast food services for all tastes
- Spa

### Activites for all the family

- Archery
- Beach volleyball
- Gym Aquagym
- Table tennis
- Tennis courts
- Mini tournaments
- Kids club
- Scooters & Bicycles to rent
- Football pitch
- Fitness room
- Introduction to horseback riding

### From the beach

- Sun bed rental
- Windsurfing
- Water-skiing
- Scuba diving
- Sailing
- Jet Ski, Pedalo,
- Paragliding

### For your evening

- Enjoy our 3 bars
- Live music, Big screen TV
- Live cabaret shows
- Theme nights
- Night Club...

# Family Tropez 25m<sup>2</sup>

4 PERSONS 2 BEDROOMS SHOWER/WC



## Equipments

Air conditioning	✓
Fully equipped kitchen	✓
Oven	✓
Toaster	✓
Microwave	✓
Refrigerator	✓
Freezer	✓
Electric Kettle	✓
Coffee maker	✓
Nespresso coffee maker	✓
Iron & ironing board	✓
TV	✓
Shower and toilet	✓
Outside furniture & umbrella	✓
2 sunbeds	✓
BBQs	✓
Wooden Terrass	✓
Slab terrace or wooden terrace	✓

Bed size : single beds 80 x 190  
double bed 140 x 190



## PRICES per week

WEEK FROM - TO		PRICES IN €	WEEK FROM - TO		PRICES IN €
April	01 - 08 (14)	280	July	01 - 08 (27)	665
	08 - 15 (15)	280		08 - 15 (28)	1155
	15 - 22 (16)	280		15 - 22 (29)	1190
	22 - 29 (17)	280		22 - 29 (30)	1190
May	29 - 06 (18)	385	August	29 - 05 (31)	1470
	06 - 13 (19)h	525		05 - 12 (32)	1470
	13 - 20 (20)	490		12 - 19 (33)	1470
	20 - 27 (21)	525		19 - 26 (34)	1050
	27 - 03 (22)	490		26 - 02 (35)	700
June	03 - 10 (23)	560	Sept	02 - 09 (36)	595
	10 - 17 (24)	560		09 - 16 (37)	455
	17 - 24 (25)	665		16 - 23 (38)	280
	24 - 01 (26)	665		23 - 30 (39)	210
			Oct	30 - 07 (40)	210
				07 - 15 (41)	210

Price HARLEY DAVIDSON 11/05 - 14/05

Minimum 3 nights..... 130€ per night



# Exotique 2 25m<sup>2</sup>

4 PERSONS 2 BEDROOMS SHOWER/WC



## PRICES per week

WEEK FROM - TO PRICES IN €			WEEK FROM - TO PRICES IN €		
April	01 - 08 (14)	315	July	01 - 08 (27)	700
	08 - 15 (15)	315		08 - 15 (28)	1190
	15 - 22 (16)	315		15 - 22 (29)	1295
	22 - 29 (17)	315		22 - 29 (30)	1295
May	29 - 06 (18)	420	August	29 - 05 (31)	1505
	06 - 13 (19) <sup>h</sup>	560		05 - 12 (32)	1505
	13 - 20 (20)	525		12 - 19 (33)	1505
	20 - 27 (21)	525		19 - 26 (34)	1155
	27 - 03 (22)	490		26 - 02 (35)	770
June			Sept	02 - 09 (36)	630
	03 - 10 (23)	595		09 - 16 (37)	490
	10 - 17 (24)	595		16 - 23 (38)	350
	17 - 24 (25)	700		23 - 30 (39)	245
	24 - 01 (26)	700	Oct	30 - 07 (40)	245
				07 - 15 (41)	245

## Equipments

Air conditioning	<input checked="" type="checkbox"/>
Fully equiped kitchen	<input checked="" type="checkbox"/>
Oven	<input type="checkbox"/>
Toaster	<input checked="" type="checkbox"/>
Microwave	<input checked="" type="checkbox"/>
Refrigerator	<input checked="" type="checkbox"/>
Freezer	<input checked="" type="checkbox"/>
Electric Kettle	<input checked="" type="checkbox"/>
Coffee maker	<input checked="" type="checkbox"/>
Nespresso coffee maker	<input type="checkbox"/>
Iron & ironing board	<input type="checkbox"/>
TV	<input checked="" type="checkbox"/>
Shower and toilet	<input checked="" type="checkbox"/>
Outside furniture & umbrella	<input checked="" type="checkbox"/>
2 sunbeds	<input checked="" type="checkbox"/>
BBOs	<input checked="" type="checkbox"/>
Wooden terrace	<input checked="" type="checkbox"/>
Slab terrace	<input type="checkbox"/>

Bed size : single beds 80 x 190  
double bed 140 x 190

Price HARLEY DAVIDSON 11/05 -14/05

Minimum 3 nights..... 130€ per night



# Lodge Confort 32m<sup>2</sup>

4 PERSONS 2 BEDROOMS SHOWER/WC



## Equipments

Air conditioning	✓
Fully equiped kitchen	✓
Oven	✓
Toaster	✓
Microwave	✓
Refrigerator	✓
Freezer	✓
Electric Kettle	✓
Coffee maker	✓
Nespresso coffee maker	✓
Iron & ironing board	✓
TV	✓
Shower and toilet	✓
Outside furniture & umbrella	✓
2 sunbeds	✓
BBQs	✓
Wooden terrace	✓
Slab terrace	✓

Bed size : single beds 80 x 190  
double bed 140 x 190

## PRICES per week

	WEEK FROM - TO	PRICES IN €		WEEK FROM - TO	PRICES IN €
April	01 - 08 (14)	350	July	01 - 08 (27)	770
	08 - 15 (15)	350		08 - 15 (28)	1225
	15 - 22 (16)	350		15 - 22 (29)	1400
	22 - 29 (17) hd	350		22 - 29 (30)	1400
May	29 - 06 (18)	455	August	29 - 05 (31)	1575
	06 - 13 (19)	595		05 - 12 (32)	1575
	13 - 20 (20)	560		12 - 19 (33)	1575
	20 - 27 (21)	560		19 - 26 (34)	1225
	27 - 03 (22)	525		26 - 02 (35)	805
June	03 - 10 (23)	630	Sept	02 - 09 (36)	700
	10 - 17 (24)	630		09 - 16 (37)	595
	17 - 24 (25)	770		16 - 23 (38)	385
	24 - 01 (26)	770	Oct	23 - 30 (39)	280
				30 - 07 (40)	280
				07 - 15 (41)	280



Price HARLEY DAVIDSON 11/05 -14/05

Minimum 3 nights ..... 160€ per night

# Exotique 2 plus 29m<sup>2</sup>

4 PERSONS 2 BEDROOMS SHOWER/WC



## PRICES per week

WEEK FROM - TO			PRICES IN €		
April	01 - 08 (14)	385	July	01 - 08 (27)	805
	08 - 15 (15)	385		08 - 15 (28)	1295
	15 - 22 (16)	385		15 - 22 (29)	1645
	22 - 29 (17) hd	385		22 - 29 (30)	1645
May	29 - 06 (18)	490	August	29 - 05 (31)	1785
	06 - 13 (19)	630		05 - 12 (32)	1785
	13 - 20 (20)	560		12 - 19 (33)	1785
	20 - 27 (21)	595		19 - 26 (34)	1365
	27 - 03 (22)	560		26 - 02 (35)	840
June	03 - 10 (23)	630	Sept	02 - 09 (36)	735
	10 - 17 (24)	665		09 - 16 (37)	665
	17 - 24 (25)	805		16 - 23 (38)	455
	24 - 01 (26)	805		23 - 30 (39)	315
			Oct	30 - 07 (40)	315
				07 - 15 (41)	315

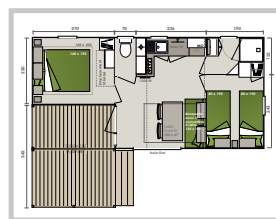
## Equipments

- Air conditioning ☒
- Fully equipped kitchen ☒
- Oven ☐
- Toaster ☒
- Microwave ☒
- Refrigerator ☒
- Freezer ☒
- Electric Kettle ☒
- Coffee maker ☒
- Nespresso coffee maker ☒
- Iron & ironing board ☒
- TV ☒
- Shower and toilet ☒
- Outside furniture ☒
- 2 sunbeds ☒
- BBQs ☒
- Wooden terrace ☒
- Slab terrace ☐

Bed size : single beds 80 x 190  
double bed 160 x 190

Price HARLEY DAVIDSON 11/05 - 14/05

Minimum 3 nights..... 160€ per night





# Riviera Lodge 35m<sup>2</sup>

6 PERSONS 3 BEDROOMS 2 SHOWER/WC



## Equipments

- Air conditioning ☒
- Fully equipped kitchen ☒
- Oven ☒
- Toaster ☒
- Microwave ☒
- Refrigerator ☒
- Freezer ☒
- Electric Kettle ☒
- Coffee maker ☒
- Nespresso coffee maker ☐
- Iron & ironing board ☒
- TV ☒
- Shower and toilet ☒
- Outside furniture ☒
- 2 sunbeds ☒
- BBQs ☒
- Wooden Terrace ☒

Bed size : single beds 80 x 190  
double bed 140 x 190

## PRICES per week

WEEK FROM - TO			PRICES IN €	WEEK FROM - TO			PRICES IN €
April	01 - 08 (14)		420	July	01 - 08 (27)		840
	08 - 15 (15)		420		08 - 15 (28)		1365
	15 - 22 (16)		420		15 - 22 (29)		1750
	22 - 29 (17) hd		420		22 - 29 (30)		1750
May	29 - 06 (18)		525	August	29 - 05 (31)		1890
	06 - 13 (19)		700		05 - 12 (32)		1890
	13 - 20 (20)		595		12 - 19 (33)		1890
	20 - 27 (21)		665		19 - 26 (34)		1400
	27 - 03 (22)		630		26 - 02 (35)		910
June	03 - 10 (23)		700	Sept	02 - 09 (36)		805
	10 - 17 (24)		735		09 - 16 (37)		700
	17 - 24 (25)		840		16 - 23 (38)		490
	24 - 01 (26)		840		23 - 30 (39)		350
				Oct	30 - 07 (40)		350
					07 - 15 (41)		350

Price HARLEY DAVIDSON 11/05 -14/05

Minimum 3 nights ..... 220€ per night





# Exotique 3 32m<sup>2</sup>

6 PERSONS 3 BEDROOMS SHOWER/WC  
WIFI



## PRICES per week

WEEK FROM - TO		PRICES IN €	WEEK FROM - TO		PRICES IN €
April	01 - 08 (14)	455	July	01 - 08 (27)	875
	08 - 15 (15)	455		08 - 15 (28)	1400
	15 - 22 (16)	455		15 - 22 (29)	1785
	22 - 29 (17) hd	455		22 - 29 (30)	1785
May	29 - 06 (18)	560	August	29 - 05 (31)	1960
	06 - 13 (19)	770		05 - 12 (32)	1960
	13 - 20 (20)	700		12 - 19 (33)	1960
	20 - 27 (21)	735		19 - 26 (34)	1505
	27 - 03 (22)	700		26 - 02 (35)	980
			Sept	02 - 09 (36)	840
June	03 - 10 (23)	770		09 - 16 (37)	770
	10 - 17 (24)	805		16 - 23 (38)	560
	17 - 24 (25)	875		23 - 30 (39)	420
	24 - 01 (26)	875	Oct	30 - 07 (40)	420
				07 - 15 (41)	420

## Equipments

- Air conditioning ☒
- Fully equiped kitchen ☒
- Oven ☒
- Toaster ☐
- Microwave ☒
- Refrigerator ☒
- Freezer ☒
- Electric Kettle ☒
- Coffee maker ☒
- Nespresso coffee maker ☒
- Iron & ironing board ☒
- TV ☒
- Shower and toilet ☒
- Outside furniture ☒
- 2 sunbeds ☒
- BBQs ☒
- Wooden Terrace ☒

Bed size : single beds 80 x 190  
double bed 160 x 190



Price HARLEY DAVIDSON 11/05 - 14/05

Minimum 3 nights..... 220€ per night

bj riviera  holidays

**INVITES YOU TO DISCOVER THEIR  
NEW CAMPING  
BETWEEN CANNES AND GRASSE**



 **Le Parc  
des Monges**



Rendez vous [www.parcdesmonges.com](http://www.parcdesmonges.com) +33 (0)4 93 60 91 71



# SPECIAL OFFERS

Discounts valid until 20th February :

5% discount for a deposit paid within 2 weeks  
of making a reservation.

10% discount if the balance is paid by the 20th February.

10% discount for a 2 week reservation  
from the 1st April until the 10th June  
or from 16th September until the 15th October.

Over 65s only : Book 2 weeks from the 1st April  
until the 10th June or from 16th September to the 15th October  
and get the 3rd week free (cheapest week only).

Special month price for bookings in April, May,  
from the 3rd June and from the 2nd September equivalent  
of up to 30% discount.

Offers cannot be combined.  
Offers may be applied after reservation.

Extras are not included in the discounts.

You can find details of our tariffs  
in the reservation form on the last page.



## MAP OF THE CAMPING

Votre n° mobil home :

## Prairies de la Mer



# ACTIVITIES TO DO IN THE AREA

## Visits

Ferry crossing to Saint Tropez  
«Gorge du Verdon», Monaco,  
Nice & Cannes.

The local charming villages  
(Saint Maxime, Gassin,  
Port-grimaud, Saint Tropez...)  
Isles «du Levant» (Port-Cros,  
Porquerolles) nature reserves.

Marine land

Wine tasting



## Leisure Time

Relax on the Beach

Water parks

(Sainte Maxime, Frejus)

Luna Parc, fun fare.

Bowling

Mini Golf



## Sports

Go-Karting

Golf

Water sports

Paintball



# HOW TO FIND US ?



Coordonnées GPS Latitude 43.2806° / 43°16.83'N 6.5820° / 6° 34.92'E

By car :

When driving from Nice on the A8, take the exit number 36 «LE MUY» follow the direction Sainte Maxime then upon arrival in Sainte Maxime follow Saint Tropez. After about 7/8 km Sainte Maxime you will come up to a big round about take the 3rd exit drive into Camping Prairies de la Mer and ask for the reception of BJ RIVIERA HOLIDAYS.

When driving from Aix en Provence you can take exit n° 36 as above or the exit number 13 «Le Luc» follow the signs to Saint Tropez you will find the road very windy but you will save some time on your journey (no traffic) you drive threwh villages Garde Freinet then Grimaud after grimaud follow the signs showing Port Grimaud look for camping Prairies de la Mer and ask for the reception of BJ RIVIERA HOLIDAYS.

By plane :

The airport of Nice is 1H20 minutes drive to Bj Riviera Holidays.

The airport of Toulon is 55 minutes drive to BJ Riviera Holidays.

We can organise a pick up service for our guests from both the airports for discounted rates for Nice and Toulon.

Our office is situated at the emplacement n°1761 on the camping Les Prairies de la Mer



## RESERVATION CONDITIONS

### BJ RIVIERA

In order to be able to take advantage of the services offered by BJ Riviera, we ask you to read carefully the general conditions below. These conditions govern the sale of stays and are valid from the time of placing the reservation. Reservation of a stay implies complete acceptance of our general conditions.

Camping Les Prairies de La Mer is open from 1st april until the 15th october.

#### Reservation Conditions

Reservations take effect only with the agreement of BJ RIVIERA, on receipt of the deposit and after reception of either the duly completed and signed reservation contract or acceptance of the general conditions of sale in the case of an on-line reservation.

Reservations are only binding on BJ RIVIERA if BJ RIVIERA accepts them, which BJ RIVIERA is free to do or to refuse, depending on availability and, in general, any circumstances likely to impede the fulfilment of the reservation made.

BJ Riviera offers family holidays, in the traditional sense, with accommodation that is specially designed with this in mind. BJ Riviera reserves the right to refuse any reservation that goes against this principle, or which seeks to divert it.

Reservation of a rental is made personally. In no case can you sub-let or transfer your reservation without the prior approval of BJ Riviera.

Minors must be accompanied by their parents or legal guardians.

### Rental

The rented accommodation is equipped.

The basic tariff is from 1 to 6 places depending on the type of rental.

BJ Riviera reserves the right to refuse access to the village to groups or families arriving with a larger number of members than the capacity of the accommodation rented, or to increase the cost of the stay accordingly.

#### Tariffs and tourist tax

The prices given are valid for the 2017 season; they are given in Euros, all taxes included.

Tourist tax is included in the cost of the stay (2017: €0.60 Grimaud)

### Payment Conditions

For reservations made more than 30 days before the start of the stay, a deposit of 30% of the price of the reserved services must be paid to BJ Riviera on reservation. The balance must be paid no later than 30 days before the date of the start of the stay or on arrival at our office.

### Cancellation and changes

Changes to your reservation

Changes to your reservation can be made without fees, subject to availability.

In the absence of any message from you indicating a delay to your arrival date, the accommodation can be put back on sale 24 hours after the arrival date indicated in the contract, and in consequence you will lose your reservation as well as the amount paid.

### Unused services

Rentals that are interrupted or shortened by you (late arrival, early departure) will not give rise to any refund.

### Cancellation by BJ Riviera

In case of cancellation by BJ Riviera, the total cost of the stay will be refunded. This cancellation cannot, however, give rise to payment of damages and interest.

#### Cancellation by the client.

In case of cancellation, we ask you to inform us quickly in writing, by email or by fax, with reasons.

### Refund in case of subscription to our insurance:

We will refund all sums paid except the reservation fee of 75 Euros and the insurance premium of 45 Euros, up to the day before your arrival.

### Refund in the absence of subscription to our cancellation insurance:

We will refund all sums paid, except the reservation fee of 75 Euros, up to 30 days before your arrival.

If cancellation takes place less than 30 days before your arrival no refund will be made and the balance of the rental will remain due.

### Cancellation Insurance

We offer cancellation insurance for the sum of 45 Euros per stay. This guarantees you a refund of the sums paid in case of cancellation of your stay, excepting the reservation fee of 75 Euros.

### Your stay

#### Arrival

The arrival days vary according to the period. Reception takes place in our office situated on site 1761 of the Prairies de la mer camp site.

On the day of your arrival at BJ Riviera, mobile homes will be available as from 4.00pm. However, in case of early arrival and according to availability, everything will be done to reduce the wait.

A deposit of 120 Euros is required on arrival.

This deposit will be returned to the client on the day of departure after a complete check (inventory) of the mobile home. Management reserves the right to retain some or all of the deposit if hygiene and / or the rented equipment has not been respected. If the client needs to leave outside office hours, the mobile home will be checked later and the deposit returned by post.

### During your stay

It is up to the holidaymaker to take out insurance, and BJ Riviera declines all responsibility in case of theft, fire, storm, etc, or for the civil responsibility of the holidaymaker.

BJ Riviera declines all responsibility concerning valuables, vehicles parked on the site and within the camp site, and any personal possessions. Safes can be rented at reception (2017 tariff: €21 per week + € 15 deposit). All clients must comply with the provisions of the internal regulations. Renters are responsible for disturbances and nuisance caused by people staying with them or visiting them.

### Departure

Rented accommodation: on the day of departure indicated in the contract, the accommodation must be vacated before 10.00am. The accommodation must be handed back in a perfectly clean state and the inventory can be checked, any broken or damaged object will be

charged to you, as well as any repairs that are deemed necessary. The deposit will be returned to you at the end of the stay after deduction, on presentation of invoices, for any possible damage noted during the departure inspection.

Withholding return of the deposit does not exclude further liability for damage if the costs incurred are higher than the amount of the deposit.

If the accommodation has not been cleaned before departure, a cleaning fee will be payable (€48 / home). For all late departures, you can be invoiced for a further day at the nightly rate in force at the time.

### Animals

Animals must be constantly monitored and kept on a leash by their owners during the stay. Any lack of hygiene (cleaning requisites are freely available at reception) or of safety caused by the animal may be sanctioned by the expulsion of its owners. An order by the prefect forbids the presence of any domestic animal on the beach. The vaccination record for dogs and cats must be up to date. Access of category 1 dogs to public transport, public places except for the street and premises open to the public is strictly forbidden. Category 2 dogs must be muzzled and held on a leash by an adult.

### Disputes

In case of dispute, the courts with jurisdiction over the locality of the camp site will be competent. Any complaint concerning a lack of conformity of the services provided compared with contractual obligations must be sent in writing (registered letter with proof of receipt) to the managers of the camp site concerned

Responsibility of BJ Riviera

The client expressly acknowledges that BJ Riviera will not be held responsible for communication by its partners or by any third party of false information that may be mentioned in the BJ Riviera brochure or website concerning the host site, and in particular the photographs, qualities, activities, entertainment, services and dates of operation.

All photos and texts used in the BJ Riviera brochure or on its internet site are non contractual. They are given only for information.

It may happen that certain activities and facilities offered by the camp site and indicated in the description in the brochure are suspended, especially for climatic reasons or by reason of force majeure as defined by French courts.

### Data files and individual liberties

The information you send when making your order will not be divulged to any third party. BJ Riviera will consider it as being confidential. It will be used only by the internal services of BJ Riviera for the processing of your order and to strengthen and personalise the sending of offers reserved for clients of BJ Riviera as a function of their centres of interest.

In accordance with the law on data files and individual liberties of 6 January 1978, you have a right to access and correct your personal data. For this you just need to make a request by mail or by letter to the following address, giving your name, first name and address:

BJ Riviera Holidays - BP 10135-83314 GRIMAUD CEDEX

## BOOKING FORM

Surname

Firstname

Telephone

Mobile  
phone

Email

Address

Postal Code

City

Country

## Accommodation

- ☐ Family Tropez ☐ Exotique 2 ☐ Lodge Confort  
☐ Exotique 2 plus ☐ Riviera Lodge ☐ Exotique 3

## Insurance

Cancellation insurance

☐ 45€

Beginning of stay

End of stay

## Car

Registration n°

Color

Make

Number

10€ per additional car<sup>(1)</sup>

<sup>(1)</sup>Our rates include a car by emplacement, any additional vehicle will be charged 10€. See conditions.

FULL PRICE OF HIRE

€

DEPOSIT OF 30%

€

BALANCE

€

CAUTION

€

TOTAL AMOUNT DUE

€

Please fill in and return by email : [info@bj-rivieraholidays.com](mailto:info@bj-rivieraholidays.com)  
with a copy of bank transfer

**Or by letter :**

BJ Riviera Holidays - BP 10135 - 83314 Grimaud Cedex  
with 1/3 of the total as deposit

## Extras

Single bedding

☐ 10€\*

Single bedding and towels

☐ 16€\*

Double bedding

☐ 12€\*

Double bedding and towels

☐ 20€\*

Cleaning

☐ 48€\*

Baby Kit

☐ 22€\*

\*Per week

## Names of people in our group

Surname

Firstname

Date of birth

1.

2.

3.

4.

5.

6.

☐ By signing I state that I understand and  
accept the terms and conditions for the rental

Date