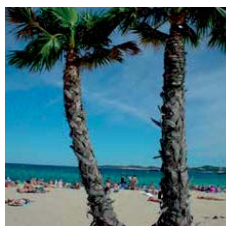




Golfe de Saint-Tropez **bj riviera** holidays



DS ONE VACANCES



New!!

DS ONE VACANCES - BP 10135 - 83314 Grimaud CEDEX

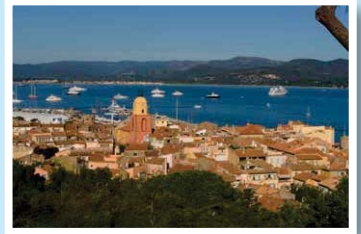
Tel. : +33 (0)4 94 45 47 18 - e-mail : prairiedelamer@dsonovacances.com

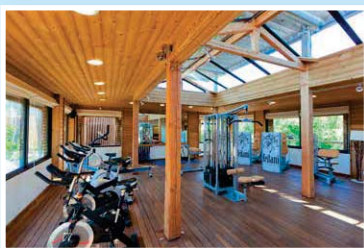
www.dsonovacances.com

Camping Prairies de la Mer

Our Mobile homes are located on Prairies de la Mer, one of the premier camping parks of the Cote d'Azur in the heart of the bay of Saint Tropez. Only a stroll away from the beautiful Port Grimaud, The Riviera's little Venice.

Let yourself be tempted by a stay in the south of France on a beachside camp site. All the team at DS One Vacances look forward to greeting you under the sun of Port Grimaud.





Village dedicated to your holiday experience...

Facilities on site

- 2 Supermarkets
- Bakers
- Laundry
- Newsagents
- Carrousel
- Mini fair ground
- Ice cream parlours
- Mini markets
- Hairdressers
- Excursions office
- Restaurants
- Fast food services for all tastes
- Spa

Activites for all the family

- Archery
- Beach volleyball
- Gym Aquagym
- Table tennis
- Tennis courts
- Mini tournaments
- Kids club
- Scooters & Bicyclesto rent
- Football pitch
- Fitness room
- Introduction to horseback riding

From the beach

- Sun bed rental
- Windsurfing
- Water-skiing
- Scuba diving
- Sailing
- Jet Ski, Pedalo,
- Paragliding

For your evening

- Enjoy our 3 bars
- Live music, Big screen TV
- Live cabaret shows
- Theme nights
- Night Club...

NEW: SWIMMING POOL

Family Tropez 25m²

4 PERSONS 2 BEDROOMS SHOWER/WC



Equipments

- Air conditioning ✓
- Fully equipped kitchen ✓
- Microwave ✓
- Refrigerator ✓
- Freezer ✓
- Electric Kettle ✓
- Coffee maker ✓
- TV ✓
- Shower and toilet ✓
- Outside furniture & umbrella ✓
- 2 sunbeds ✓
- Gas Plancha ✓
- Slab terrace or wooden terrace ✓



Bed size : single beds 80 x 190
double bed 140 x 190

Price **HARLEY DAVIDSON**

Minimum 3 nights.....130 € per night

Price **WEEKEND ASCENSION**

Minimum 3 nights90 € per night

Price **WEEKEND PENTECÔTE**

Minimum 2 nights90 € per night



Exotique 2 25m²

4 PERSONS 2 BEDROOMS SHOWER/WC



Equipments

- Air conditioning
- Fully equipped kitchen
- Microwave
- Refrigerator
- Freezer
- Electric Kettle
- Coffee maker
- TV
- Shower and toilet
- Outside furniture & umbrella
- 2 sunbeds
- Gas Plancha
- Wooden terrace

Bed size : single beds 80 x 190
double bed 140 x 190

Price HARLEY DAVIDSON

Minimum 3 nights.....130 € per night

Price WEEKEND ASCENSION

Minimum 3 nights100 € per night

Price WEEKEND PENTECÔTE

Minimum 2 nights100 € per night



Lodge Confort 32m²

4 PERSONS 2 BEDROOMS SHOWER/WC



Equipments

- Air conditioning
- Fully equiped kitchen
- Microwave
- Refrigerator
- Freezer
- Electric Kettle
- Coffee maker
- Nespresso Machine
- TV
- Shower and toilet
- Outside furniture & umbrella
- 2 sunbeds
- Gas Plancha
- Wooden Terrace



Bed size : single beds 80 x 190
double bed 140 x 190



Price **HARLEY DAVIDSON**

Minimum 3 nights.....160 € per night

Price **WEEKEND ASCENSION**

Minimum 3 nights110 € per night

Price **WEEKEND PENTECÔTE**

Minimum 2 nights110 € per night

Exotique 2 plus 29m²

4 PERSONS 2 BEDROOMS SHOWER/WC



Equipments

- Air conditioning
- Fully equipped kitchen
- Microwave
- Refrigerator
- Freezer
- Washing Machine
- Electric Kettle
- Coffee maker
- Nespresso Machine
- TV
- Shower and toilet
- Outside furniture & umbrella
- 2 sunbeds
- Gas Plancha
- Wooden terrace
- Wi-Fi

Bed size : single beds 80 x 190
double bed 160 x 190

Price HARLEY DAVIDSON

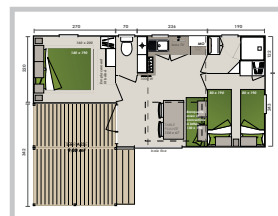
Minimum 3 nights.....160 € per night

Price WEEKEND ASCENSION

Minimum 3 nights120 € per night

Price WEEKEND PENTECÔTE

Minimum 2 nights120 € per night



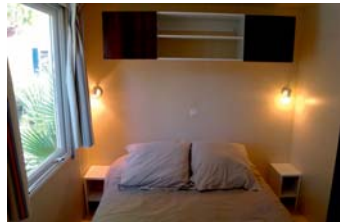
Riviera Lodge 35m²

6 PERSONS 3 BEDROOMS SHOWER/WC



Equipments

- Air conditioning
- Fully equiped kitchen
- Microwave
- Refrigerator
- Freezer
- Electric Kettle
- Coffee maker
- Nespresso coffee maker
- TV
- Shower and toilet
- Outside furniture & umbrella
- 2 sunbeds
- Gas Plancha
- Wooden Terrace



Bed size : single beds 80 x 190
double bed 140 x 190



Price HARLEY DAVIDSON

Minimum 3 nights.....220 € per night

Price WEEKEND ASCENSION

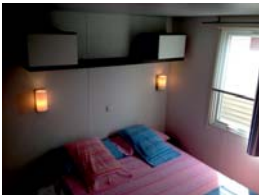
Minimum 3 nights140 € per night

Price WEEKEND PENTECÔTE

Minimum 2 nights140 € per night

Exotique 3 32m²

6 PERSONS 3 BEDROOMS SHOWER/WC



Equipments

- Air conditioning ✓
- Fully equipped kitchen ✓
- Microwave ✓
- Refrigerator ✓
- Freezer ✓
- Washing Machine ✓
- Electric Kettle ✓
- Coffee maker ✓
- Nespresso Machine ✓
- TV ✓
- Shower and toilet ✓
- Outside furniture & umbrella ✓
- 2 sunbeds ✓
- Gas Plancha ✓
- Wooden terrace ✓
- Wi-Fi ✓

Bed size : single beds 80 x 190
double bed 160 x 190

Price HARLEY DAVIDSON

Minimum 3 nights.....220 € per night

Price WEEKEND ASCENSION

Minimum 3 nights150 € per night

Price WEEKEND PENTECÔTE

Minimum 2 nights150 € per night



DSONE VACANCES INVITES YOU TO DISCOVER THEIR
NEW CAMPING
BETWEEN CANNES AND GRASSE



www.parcdesmonges.com +33 (0)4 93 60 91 71



SPECIAL OFFERS

STAYS FROM THE OPENING OF THE CAMPSITE UNTIL THE END OF JUNE AND FROM THE MIDDLE OF SEPTEMBER UNTIL THE CLOSING OF THE CAMPSITE CAN ENJOY THE FOLLOWING DISCOUNTS:

10% DISCOUNT

for a minimum 7 nights booking.

+65 Years old : for a 2 week reservation we offer the third week free (less expensive week).

STAYS FROM BEGINING OF JULY UNTIL MIDDLE OF SEPTEMBER

Until the 20th February, enjoy a 5% DISCOUNT when paying the deposit within two weeks.

Enjoy a total of 10% discount if the balance is paid before the 20th February.

SPECIAL MONTHLY price in April, May , June and September, up to DISCOUNTS OF 30%. Offers are not cumulative and will be applied also after reservations online.

Discounts are not applied on extras such as sheets, towels, end of cleaning or cancellation insurance.

For more details about our accommodations and prices, you can visit our website

www.dsonevacances.com

or join us by email

prairiesdelamer@dsonevacances.com

or by phone on

0033 494 454 718.



Like our Facebook page to get updates on special internet discounts.

MAP OF THE CAMPING



**DS ONE
VACANCES**



bj riviera holidays

Prairies de la Mer

- FAMILY TROPEZ
- LODGE CONFORT
- RIVIERA LODGE
- EXOTIQUE 2
- EXOTIQUE 2 PLUS
- EXOTIQUE 3



- 1** Reception Business Center
- 2** Reception 24h/24
- 3** Salon de Coiffure - Riviera Bike Laverie - Supermarché
- 4** Le Petit Train
- 5** Presse Cadeaux - Ulu Watu Creperie - Long Bar - Pic Nic
- 6** Manège
- 7** Cabinet Médical
- 8** Poste de Secours
- 9** Riviera Water Sport
- 10** European Diving School Cabane Les Pieds dans l'eau

- 11** Les Pieds dans l'eau
- 12** Manava Plage
- 13** Le Sun
- 14** Conciergerie Ali Baba
- 15** Canopy
- 16** Babyland
- 17** Spa by Sarôme
- 18** Odlessey Supermarché - Laverie
- 19** Club Animation
- 20** Parking Bus

Markets :
Monday : Ste-Maxime - Tuesday : St Tropez
Wednesday : Cogolin, La Garde Freinet
Thursday : Grimaud, Port Grimaud
Friday : Ste-Maxime - Saturday : St Tropez
Sunday : Ramatuelle, Port Grimaud

ACTIVITIES TO DO IN THE AREA

Visits

Ferry crossing to Saint Tropez
«Gorge du Verdon», Monaco,
Nice & Cannes.

The local charming villages
(Saint Maxime, Gassin,
Port-grimaud, Saint Tropez...)
Isles «du Levant» (Port-Cros,
Porquerolles) nature reserves.

Marine land
Wine tasting



Leisure Time

Relax on the Beach

Water parks
(Sainte Maxime, Frejus)

Luna Parc, fun fare.

Bowling
Mini Golf



Sport

Go-Karting

Golf

Water sports

Paintball



HOW TO FIND US?



Coordonnées GPS Latitude 43.2806° / 43°16.83'N 6.5820° / 6° 34.92'E

By car

When driving from Nice on the A8, take the exit number 36 «LE MUY» follow the direction Sainte Maxime then upon arrival in Sainte Maxime follow Saint Tropez.

After about 7/8 km Sainte Maxime you will come up to a big round about take the 3rd exit drive into Camping Prairies de la Mer and ask for the reception of DS ONE VACANCES.

When driving from Aix en Provence you can take exit n° 36 as above or the exit number 13 «Le Luc» follow the signs to Saint Tropez you will find the road very windy but you will save some time on your journey (no traffic) you drive threw villages Garde Freinet then Grimaud after grimaud follow the signs showing Port Grimaud look for camping Prairies de la Mer and ask for the reception of DS ONE VACANCES.

By plane

The airport of Nice is 1H20 minutes drive to DS ONE VACANCES.

The airport of Toulon is 55 minutes drive to DS ONE VACANCES.

We can organise a pick up service for our guests from both the airports for discounted rates for Nice and Toulon.

RESERVATION CONDITIONS

In order to be able to take advantage of the services offered by DS One Vacances, we ask you to read carefully the general conditions below. These conditions govern the sale of stays and are valid from the time of placing the reservation. Reservation of a stay implies complete acceptance of our general conditions.

Reservation Conditions

Reservations take effect only with the agreement of DS One Vacances, on receipt of the deposit and after reception of either the duly completed and signed reservation contract or acceptance of the general conditions of sale in the case of an on-line reservation. Reservations are only binding on DS One Vacances if DS One Vacances accepts them, which DS One Vacances is free to do or to refuse, depending on availability and, in general, any circumstances likely to impede the fulfilment of the reservation made. DS One Vacances offers family holidays, in the traditional sense, with accommodation that is specially designed with this in mind. DS One Vacances reserves the right to refuse any reservation that goes against this principle, or which seeks to divert it. Reservation of a rental is made personally. In no case can you sub-let or transfer your reservation without the prior approval of DS One Vacances. Minors must be accompanied by their parents or legal guardians.

Accommodation Rental

The rented accommodation is equipped. The basic tariff is from 1 to 6 places depending on the type of rental. DS One Vacances reserves the right to refuse access to the campsite to groups or families arriving with a larger number of members than the capacity of the accommodation rented, or to increase the cost of the stay accordingly.

Pitch Rental

Pitches will be located near a water point and electric point. The basic tariff is from 1 person and one tent to 2 people and caravan and car or campervan. DS One Vacances reserves the right to refuse access to the campsite to groups or families arriving with a larger number of members, tents, cars, caravans or camper-vans than the capacity of the pitch, or to increase the cost of the stay accordingly.

Tariffs and tourist tax

The prices are given in Euros, all taxes included. Tourist tax is included in the cost of the stay.

Payment Conditions

For reservations made more than 30 days before the start of the stay, a deposit of 30% of the price of the reserved services must be paid to DS One Vacances on reservation. The balance must be paid 30 days before the date of the start of the stay or at the latest on arrival (check-in) at our office. For reservation made within 30 days of the start of the stay, the full amount is to be paid upon reservation. By signing the terms and conditions you agree to provide your identification matching the details on the method of payment.

Cancellation and changes

Changes to your reservation can be made without fees, subject to availability. In the absence of any message from you indicating a delay to your arrival date, the accommodation or pitch can be put back on sale 24 hours after the arrival date indicated in the contract, and in consequence you will lose your reservation as well as the amount paid.

Unused services

Rentals that are interrupted or shortened by you (late arrival, early departure) will not give rise to any refund.

Cancellation by DS One Vacances

In case of cancellation by DS One Vacances, the total cost of the stay will be refunded. This cancellation cannot, however, give rise to payment of damages and interest.

Cancellation by the client

In case of cancellation, we ask you to inform us quickly in writing, by email or by fax, with reasons.

Refund in case of subscription to our insurance

We will refund all sums paid, except the reservation fee of 75 Euros and the insurance premium of 45 Euros, up to 1 day before the date of arrival.

Refund in the absence of subscription to our cancellation insurance

We will refund all sums paid, except the reservation fee of 75 Euros, up to 30 days before your arrival. If cancellation takes place less than 30 days before your arrival no refund will be made and the balance of the rental will remain due.

Cancellation Insurance

We offer cancellation insurance for the sum of 45 Euros per stay. This guarantees you a refund of the sums paid in case of cancellation of your stay, excepting the reservation fee of 75 Euros.

Your holidays

The arrival days vary according to the period. Our office on the Camping Prairies de la mer is situated on emplacement N° 1761. Our office for Parc des Monges is located at the entrance of the camping. On the day of your arrival at DS One Vacances, mobile homes and chalets and emplacements will be available as from 4.00pm. If the customer arrives before 4.00pm at the office we will be able to do the administrative papers but we cannot guarantee the hour that the mobile home will be ready.

A deposit of 120 Euros is required on arrival for mobile homes and chalets. This deposit will be returned to the client on the day of departure after a complete check (inventory) of the accommodation. Management reserves the right to retain some or all of the deposit if hygiene and / or the rented equipment has not been respected. If the client needs to leave outside office hours, the mobile home or chalet will be checked later and the deposit destroyed.

During your stay

Arrival

It is up to the holidaymaker to take out holiday insurance. DS One Vacances declines all responsibility in case of theft, fire, storm, etc, or for the civil responsibility of the holidaymaker. DS One Vacances declines all responsibility concerning valuables, vehicles parked on the site and within the camp site, and any personal possessions. Safes can be rented on the Prairies de la mer camping at the main reception (Prairies de la mer tariff for example: €21 per week + €15 deposit). All clients must comply with the provisions of the internal regulations. Renters are responsible for disturbances and nuisance caused by people staying with them or visiting them.

Departure

Rented accommodation: on the day of departure indicated in the contract, the accommodation must be vacated before 10.00am. The

accommodation must be handed back in a perfectly clean state and the inventory can be checked, any broken or damaged object will be charged to you, as well as any repairs that are deemed necessary. The deposit will be returned to you at the end of the stay after deduction, on presentation of invoices, for any possible damage noted during the departure inspection. Withholding return of the deposit does not exclude further liability for damage if the costs incurred are higher than the amount of the deposit. If the accommodation has not been cleaned before departure, a cleaning fee will be payable (€48 / accommodation).

Pitches : on the day of departure indicated in the contract, the pitches must be vacated before 11 :00am. The pitches are expected to be handed back in the same condition they were rented e.g. free of rubbish.

Animals

Animals must be constantly monitored and kept on a leash by their owners during the stay. Any lack of hygiene (cleaning requisites are freely available at reception) or of safety caused by the animal may be sanctioned by the expulsion of its owners. An order by the prefect forbids the presence of any domestic animal on the beaches unless stated otherwise. The vaccination record for dogs and cats must be up to date. Access of category 1 dogs to public transport, public places except for the street and premises open to the public is strictly forbidden. Category 2 dogs must be muzzled and held on a leash by an adult.

Disputes

In case of dispute, the courts with jurisdiction over the locality of the camp site will be competent. Any complaint concerning a lack of conformity of the services provided compared with contractual obligations must be sent in writing (registered letter with proof of receipt) to the managers of the camp site concerned.

Responsibility of DS One Vacances

The client expressly acknowledges that DS One Vacances will not be held responsible for communication by its partners or by any third party of false information that may be mentioned in the DS One Vacances brochure or website concerning the host site, and in particular the photographs, qualities, activities, entertainment, services and dates of operation. All photos and texts used in the DS One Vacances brochure or on its internet site are non contractual. They are given only for information. It may happen that certain activities and facilities offered by the camp site and indicated in the description in the brochure are suspended, especially for climatic reasons or by reason of force majeure as defined by French courts.

Data files and individual liberties

The information you send when making your order will not be divulged to any third party. DS One Vacances will consider it as being confidential. It will be used only by the internal services of DS One Vacances for the processing of your order and to strengthen and personalise the sending of offers reserved for clients of DS One Vacances as a function of their centres of interest. In accordance with the law on data files and individual liberties of 6 January 1978, you have a right to access and correct your personal data. For this you just need to make a request by mail or by letter to the following address, giving your name, first name and address : Prairies de la mer, DS One Vacances, BP 10135, 83314 GRIMAUD CEDEX.



BOOKING FORM

Surname

Firstname

Mobile

Email

Address

Postcode

Town/City

Country

Accommodations :

- Family Tropez Exotique 2 Lodge Confort
 Exotique 2Plus Riviera Lodge Exotique 3

Arrival date

Departure date

Options

- | | | |
|---------------------------|--------------------------|------|
| Single sheets | <input type="checkbox"/> | 12€* |
| Single sheets and towels | <input type="checkbox"/> | 16€* |
| Double sheets | <input type="checkbox"/> | 14€* |
| Double sheets and towels | <input type="checkbox"/> | 20€ |
| End of clean | <input type="checkbox"/> | 48€ |
| Baby Kit (high chair+bed) | <input type="checkbox"/> | 22€* |
| Cancellation insurance | <input type="checkbox"/> | 45€ |
- *per week

Car details

Number plate

Colour

Make

Names of people in the group

Name	Firstname
<input type="text"/>	<input type="text"/>
<input type="text"/>	<input type="text"/>
<input type="text"/>	<input type="text"/>
<input type="text"/>	<input type="text"/>
<input type="text"/>	<input type="text"/>
<input type="text"/>	<input type="text"/>

Fill and return the booking form per e-mail :

info@dsonovacances.com
with the bank transfer copy

Campsite address :

Dsone Vacances, Camping des Prairies de la mer
1910 Route du littoral
83310 Port-Grimaud
France

By signing, I state that I understand and accept the terms and conditions for the rental..

Date :

Signature :